

2MP HD Temperature Measurement & Face Recognition Terminal

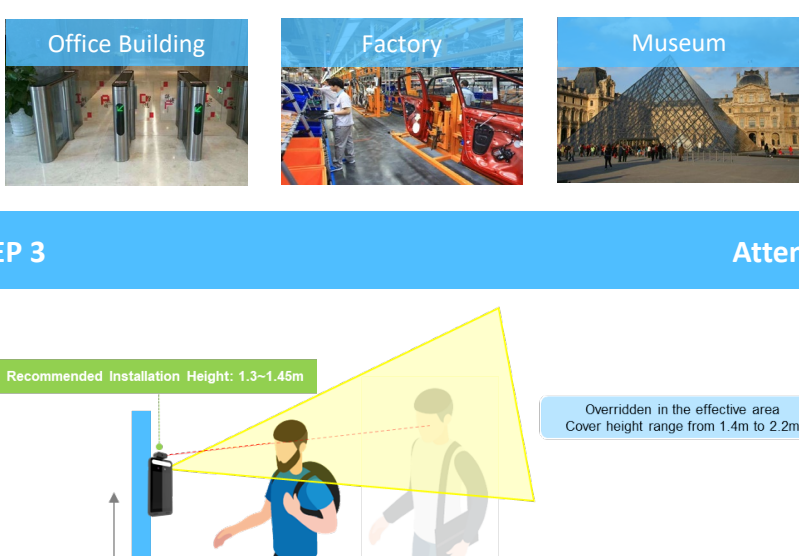
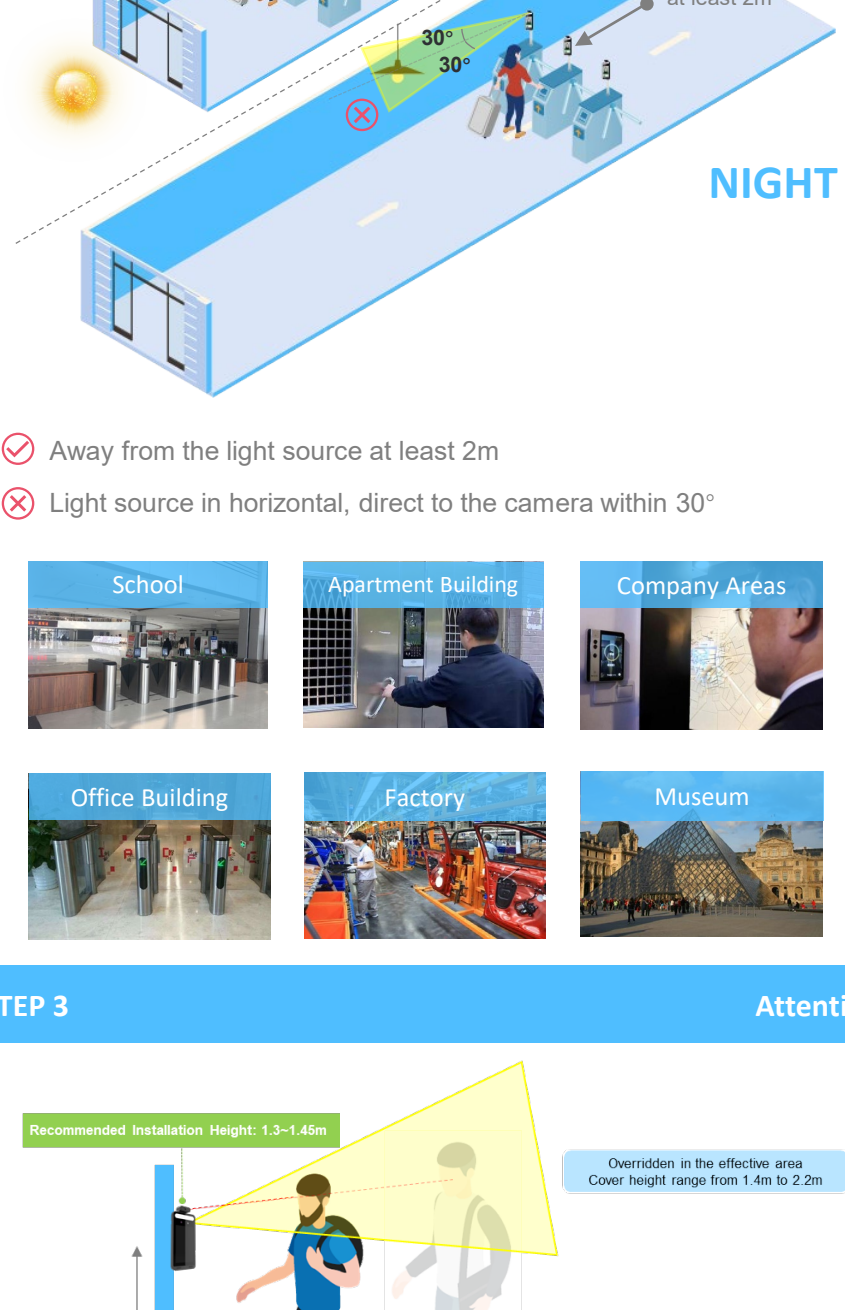
Quick Installation Guide

PRODUCT MODEL : TD-E2128-TM

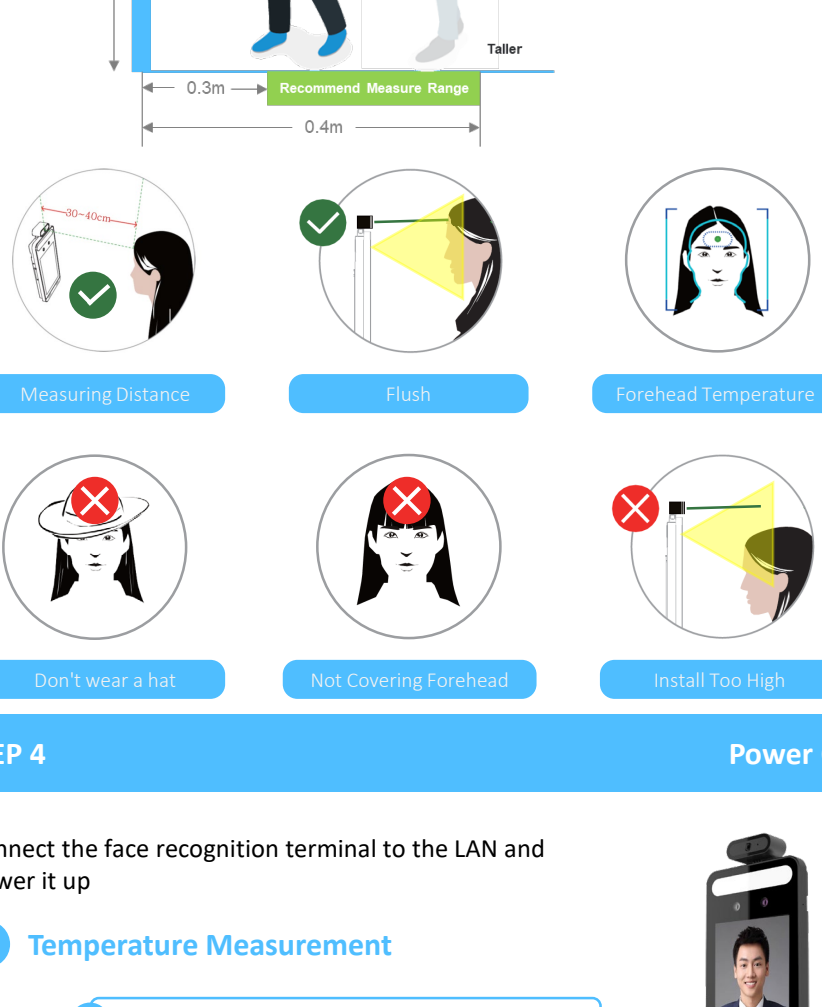
STEP 1 Hardware Assembly



STEP 2 Scenario Selection

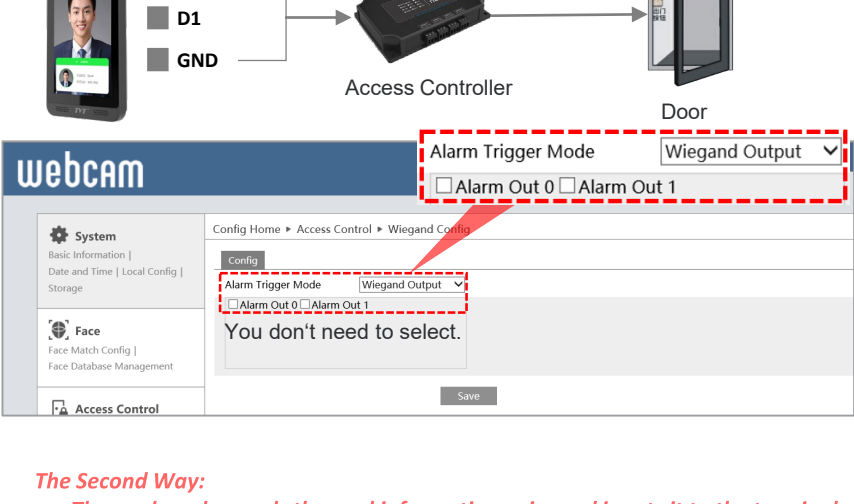
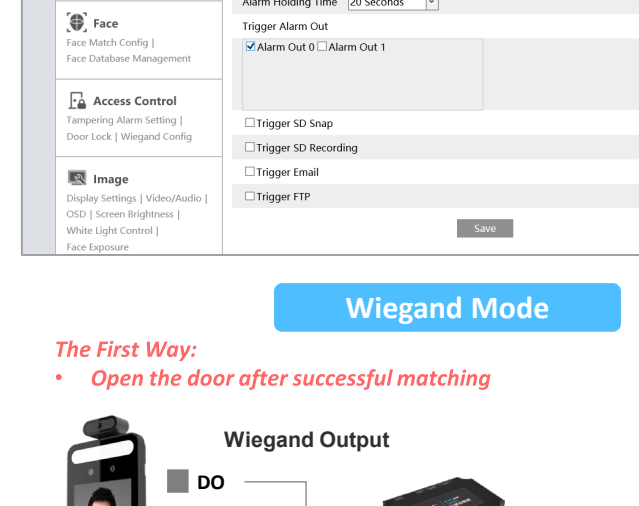
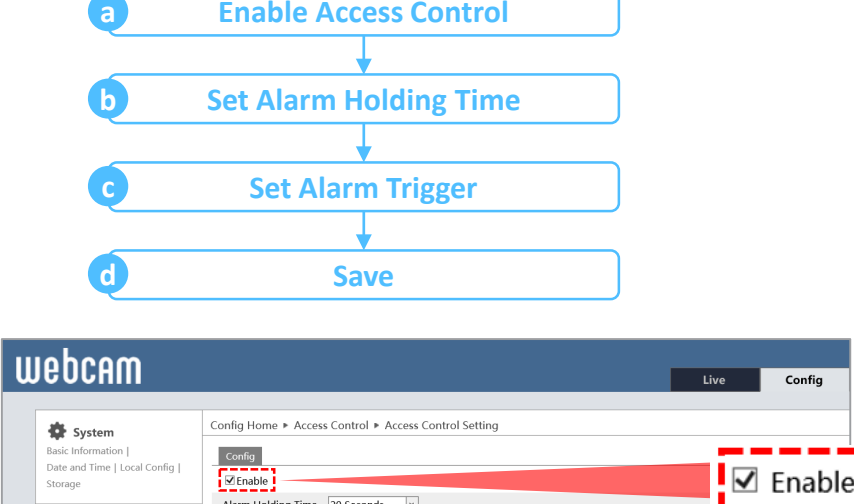
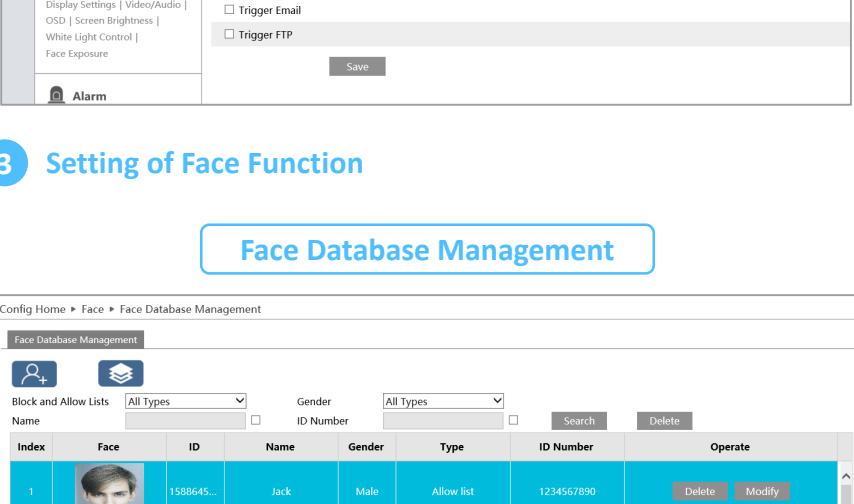
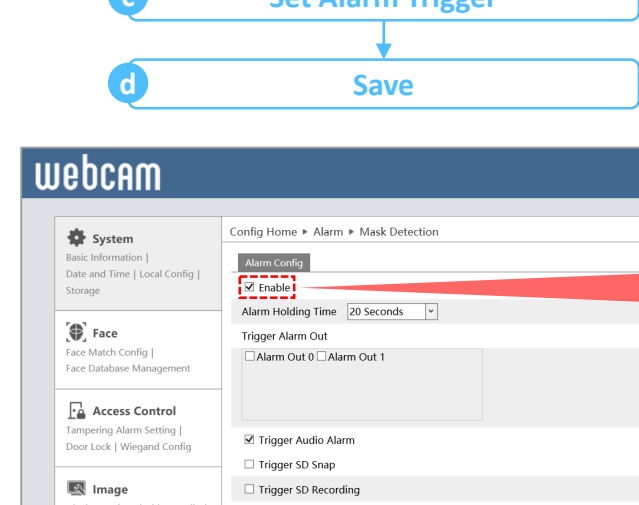
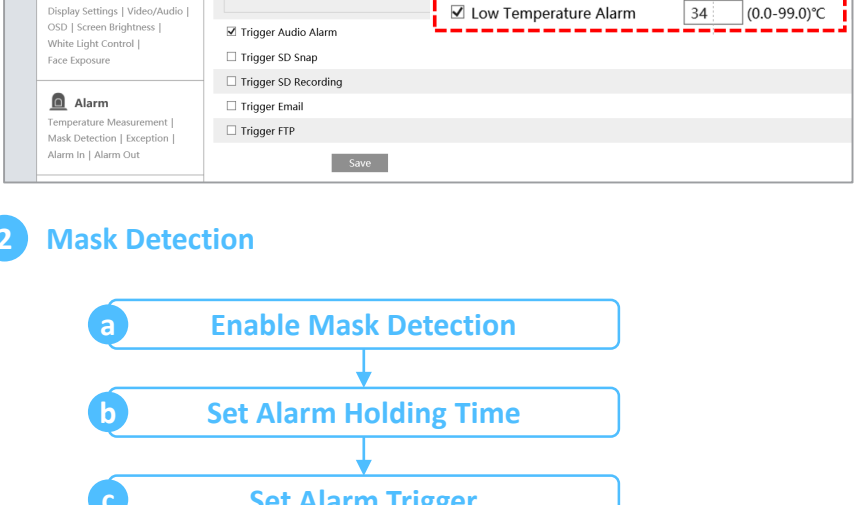
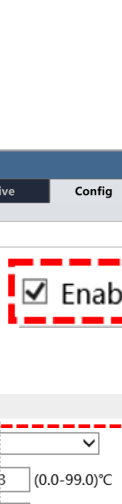
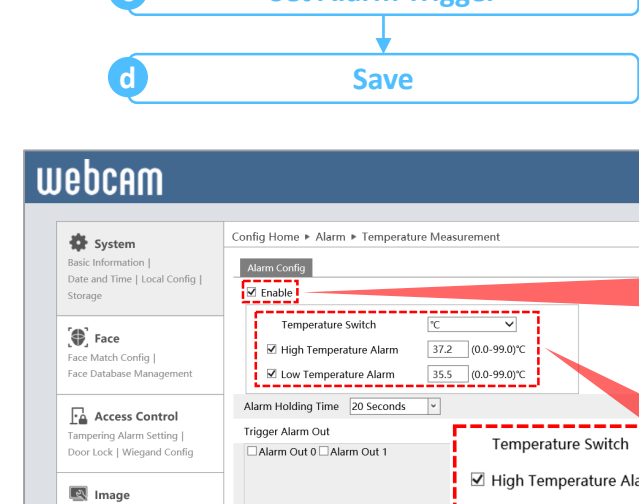


STEP 3 Attention



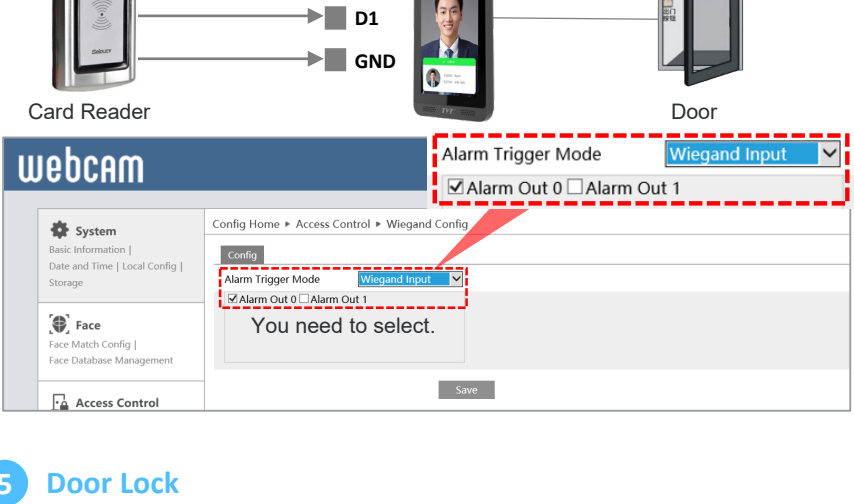
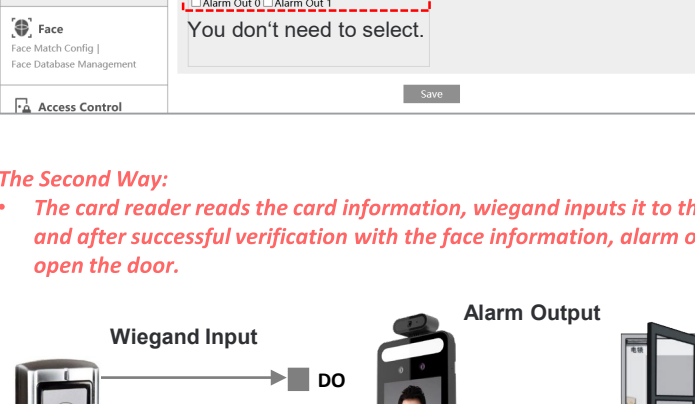
STEP 4 Power On

Connect the face recognition terminal to the LAN and power it up

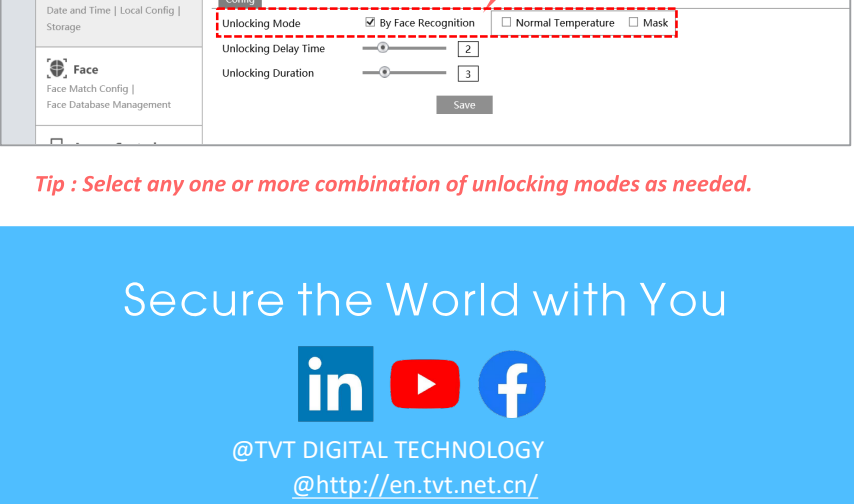
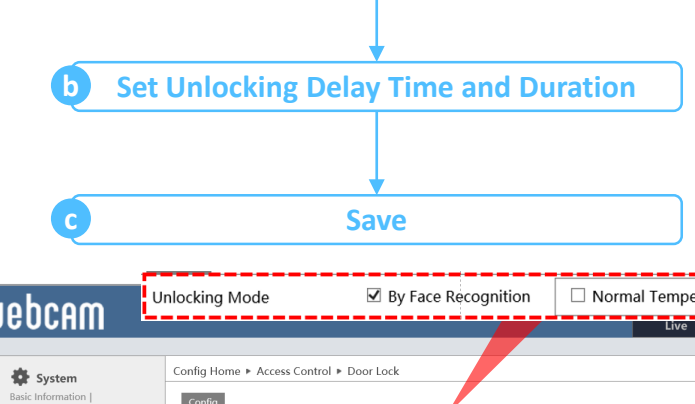


Wiegand Mode

The First Way: Open the door after successful matching



The Second Way: The card reader reads the card information, wiegand inputs it to the terminal, and after successful verification with the face information, alarm output to open the door.



5 Door Lock



Tip : Select any one or more combination of unlocking modes as needed.

Secure the World with You

@TVT DIGITAL TECHNOLOGY
@http://en.tvt.net.cn/